



FACT SHEET

THE INTEGRATED DESIGN, ENGINEERING AND AUTOMATION (IDEA) BUILDING AT THE ADVANCED TECHNOLOGY AND EDUCATION PARK (ATEP)

- ▶ The Irvine Valley College (IVC) School of Integrated Design, Engineering and Automation (IDEA) at the Advanced Technology and Education Park (ATEP) is designed for the current and next generations of innovators and students. Classes commenced in the building in March.
- ▶ The building is LEED Gold equivalent.
- ▶ Constructed by the South Orange County Community College District, this building will serve as a catalyst for IVC's career education programs, offering innovative and effective technical education through its classrooms, outdoor learning areas, collaboration spaces, technology and infrastructure, and faculty spaces.
- ▶ The total building area of 32,492 square feet contains three classrooms and six specialized teaching labs: an alternative energy lab (indoor and outdoor), an optics/photonics lab, an electronics lab, an automation/digital manufacturing lab and an additive and subtractive Design Model Prototyping lab. The building's large central lobby will serve as a social corridor for students, faculty and community members.
- ▶ Costs for design, construction and equipment: \$29.35 million.
- ▶ Integrating education with industry, the building is also home to the college's Economic and Workforce Development staff. IDEA at ATEP is conceived to support an innovative business partnering model.
- ▶ Students will benefit from on-site services including the L. C. Lee Certified Testing Center, a student resource center, admissions, counseling and financial aid. The administrative space features two dean offices and an open concept.
- ▶ Encouraging a student-centered academic experience through collaboration, the building is expected to be a creative response to the needs of the program with a cost-effective, high-quality design and a simple, flexible structural system.
- ▶ The builder and architectural team—McCarthy Building Companies, Inc. and Dougherty Architects—have worked hand-in-hand with the South Orange County Community College District stakeholders to design a building to meet the project vision.

South Orange County Community College District Board of Trustees:

Barbara J. Jay, Timothy Jemal, David B. Lang, Marcia Milchiker, T.J. Prendergast III, Terri Whitt, James R. Wright • Jordan J. Larson, Student Trustee
Thomas M. Fallo, Interim Chancellor • Glenn R. Roquemore, PhD, President, Irvine Valley College

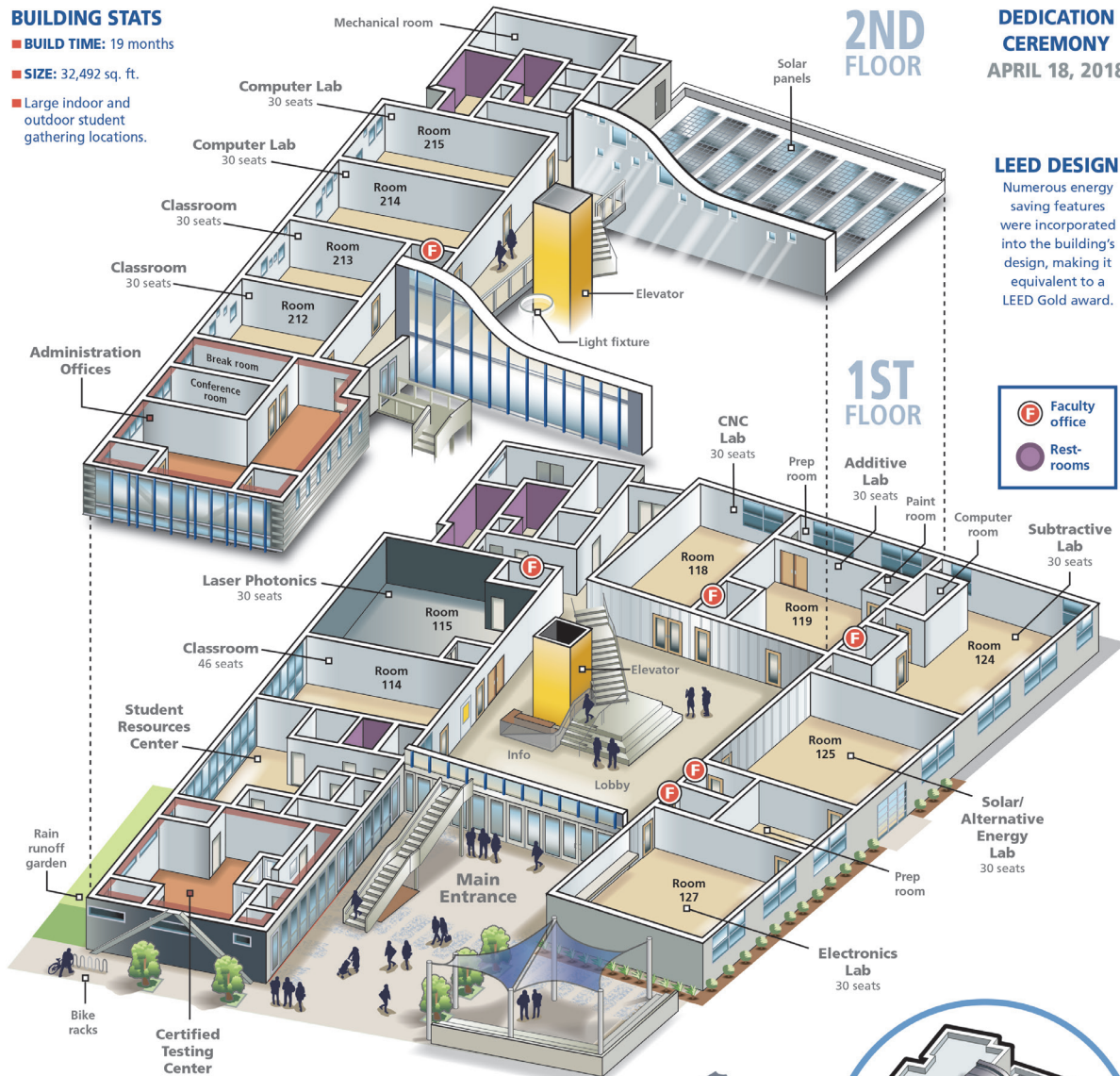
Integrated Design, Engineering and Automation (IDEA) Building

AT THE ADVANCED TECHNOLOGY & EDUCATION PARK

The IDEA Building will house career technical education programs offered by Irvine Valley College and includes laboratories for alternative energy, optics/photonics, electronics, and automation/digital manufacturing.

BUILDING STATS

- **BUILD TIME:** 19 months
- **SIZE:** 32,492 sq. ft.
- Large indoor and outdoor student gathering locations.



DEDICATION CEREMONY
APRIL 18, 2018

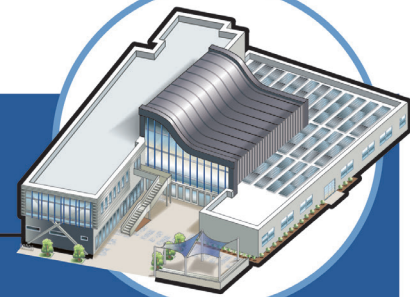
LEED DESIGN

Numerous energy saving features were incorporated into the building's design, making it equivalent to a LEED Gold award.



ADVANCED TECHNOLOGY & EDUCATION PARK AT TUSTIN LEGACY

South Orange County Community College District (SOCCCD) is developing the Advanced Technology & Education Park (ATEP) on 62 acres of the former Marine Corps Air Station in Tustin. ATEP will focus on advanced technology, career technical, and workforce development training programs to support high-demand jobs. The district's two colleges, Irvine Valley College and Saddleback College, are expanding academic programs and collaborative partnerships with other colleges, high schools and business.



FLEXIBLE DESIGN

The first permanent building at ATEP, the IDEA Building offers an effective integration of indoor and outdoor spaces, and an innovative bright interior.